

**Exam : Cisco 642-081**

**Title : Business Ready Teleworker  
Solution Fundamentals**

**Version : Demo**

## **Important Note, Please Read Carefully**

### **Other TestInside products**

#### [All TestInside.com IT Exam Products](#)

### **Our products of Offline Testing Engine**

Use the offline Testing engine product to practice the questions in an exam environment.

Build a foundation of knowledge which will be useful also after passing the exam.

#### [TestInside Testing Engine](#)

### **Latest Version**

We are constantly reviewing our products. New material is added and old material is revised. Free updates are available for 90 days after the purchase. You should check your member zone at TestInside and update 3-4 days before the scheduled exam date.

Here is the procedure to get the latest version:

1. Go to <http://www.TestInside.com>
2. Log in the **Member Center**
3. The latest versions of all purchased products are downloadable from here. Just click the links.

### **Feedback**

If you spot a possible improvement then please let us know. We always interested in improving product quality.

Feedback should be send to sales(at)TestInside.com. You should include the following: Exam number, version, page number, question number, and your login Account.

Our experts will answer your mail promptly.

### **Explanations**

This product does not include explanations at the moment. If you are interested in providing explanations for this exam, please contact sales(at)TestInside.com.

1. Due to limitations affecting voice quality, which of the broadband speeds shown is preferred in order to achieve highest voice quality on a converged data and voice teleworker connection?

- A. DSL with 128k uplink /128k downlink
- B. cable with 256k uplink /256k downlink
- C. DSL with 128k uplink /768k downlink
- D. cable with 256k uplink /1.4M downlink

**Answer: D**

2. Refer to the exhibit. Which of the following statements is a reason the DHCP server is enabled on the Teleworker home router?



- A. allows for workstations to have network values hard-coded
- B. IP network settings cannot be assigned if the VPN tunnel is down
- C. provides IP network settings to be dynamically assigned
- D. requires HTTP access to initiate assignment

**Answer: C**

3. Which integrated security feature is not provided by the Cisco Business Ready Teleworker solution?

- A. Stateful Inspection Firewall
- B. Intrusion Detection System
- C. Spam Filtering
- D. 802.1-based Authentication
- E. Proxy Authentication
- F. URL Filtering

**Answer: C**

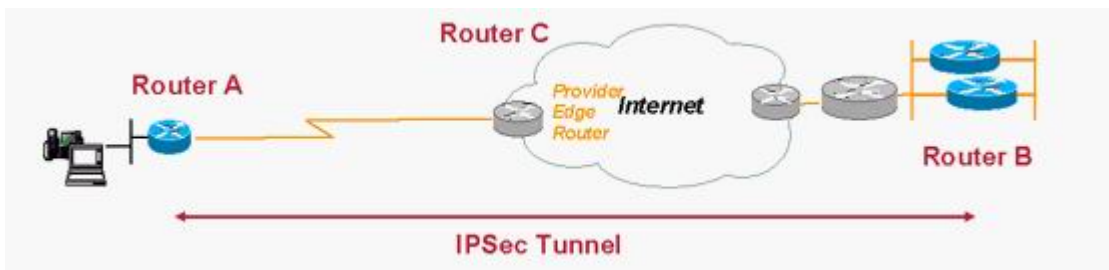
4. Why would the network manager elect to implement a configuration that includes GRE tunnels for a

teleworker deployment? Choose two.

- A. GRE can use transport mode and save up to twenty bytes per packet.
- B. The corporate network includes many discontinuous blocks of IP networks and requires split tunneling.
- C. The corporation's primary application is based on IP multicast.
- D. Without GRE, there is no means to detect a head-end failure.
- E. GRE would enable path MTU discovery.

**Answer: BC**

5. Refer to the exhibit. Assume Router A is configured for split tunneling. If the Internet Service provider was asked by the customer to provide a guarantee of at least 60 percent of the WAN link between Router A and Router C for encrypted traffic, what would be the best means of identifying this traffic to their QoS Service Policy?



- A. permit esp any permit udp any eq 500 any eq 500
- B. permit udp any eq isakmp any eq isakmp
- C. permit ip 10.81.7.0 0.0.0.7 any
- D. tcp any any eq 22

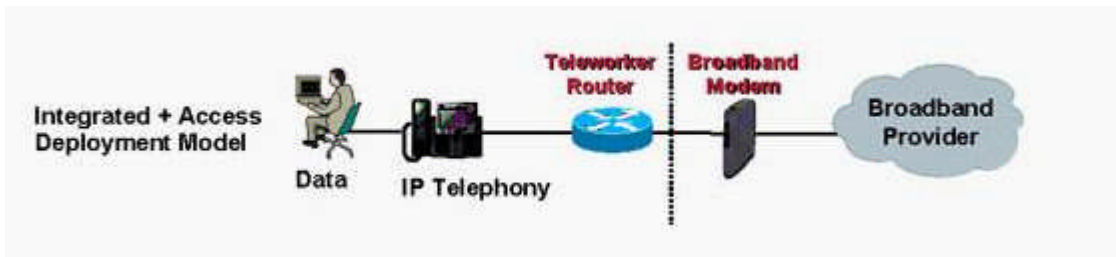
**Answer: A**

6. What is the best way to ensure that IKE/ISAKMP packets are not dropped when QoS is enabled on the uplink interface of the Teleworker router?

- A. QoS and IPsec should never be used together.
- B. IKE/ISAKMP packets are DiffSERV codepoint CS6, so the traffic is never dropped.
- C. Source IKE/ISAKMP packets off the loop-back address.
- D. Classify IKE/ISAKMP packets so they are appropriately prioritized.

**Answer: D**

7. Refer to the exhibit. Given this deployment model and the Enterprise applications, the Teleworker Router provides which functions? Choose two.



- A. Broadband access termination
- B. IPSec tunnel termination
- C. H.323 Signaling termination
- D. Traffic Shaping
- E. Compressed RTP(cRTP)for bandwidth optimization

**Answer: BD**

8. Easy VPN operates in two modes. Although Client Mode has advantages, there are environments where it should not be used. Choose two.

- A. Teleworker devices must be accessed from the central site (server, printers).
- B. IP addressing is simplified.
- C. The Teleworker LAN is a transit networking for routing.
- D. An Enterprise application does not function with Network Address Translation.
- E. The Teleworker router is an MPLS PE node.

**Answer: A**

9. Refer to the exhibit. A customer indicates their teleworkers plan to use IP phones in their home offices. The IT department has surveyed the planned teleworkers, resulting in the user groupings shown in the exhibit. To provide the highest voice quality, the best recommendations to this customer are \_\_\_\_\_. Choose two.

Group	Percent of Users	Broadband	Uplink	Downlink
A	15%	DSL	128k	128k
B	25%	DSL	128k	768k
C	60%	Cable	256k	1.4M

- A. Deploy all three groups with a QoS service policy, choosing the parameters for Traffic Shaping based on the average uplink speed across the three groups.
- B. Teleworkers in Groups A and B should inquire with their DSL providers for subscriptions with higher uplink bandwidths.
- C. Teleworkers in Group C should change their subscriptions to DSL for deployment consistency.
- D. Teleworkers in Group A should upgrade their subscription to obtain static IP addresses
- E. Teleworkers in Group A should inquire with their DSL providers for subscriptions with higher downlink bandwidths.

**Answer:** BE

10. When should you enable Network Address Translation Transparency (NAT-T) on the Teleworker?

- A. when a router between the Teleworker router and the head-end VPN router is doing NAT/pNAT and does not support IPSec pass-through
- B. when the Teleworker router itself is doing NAT/pNAT
- C. always
- D. never

**Answer:** A

11. Choose the true statement regarding QoS pre-classify.

- A. QoS pre-classify permits making QoS decisions based on elements from the unencrypted IP packet.
- B. QoS pre-classify is required when encrypting voice.
- C. QoS pre-classify is an advantage to Service Providers transporting encrypted packets.
- D. QoS pre-classify is not designed for IPSec/GRE configurations.

**Answer:** A

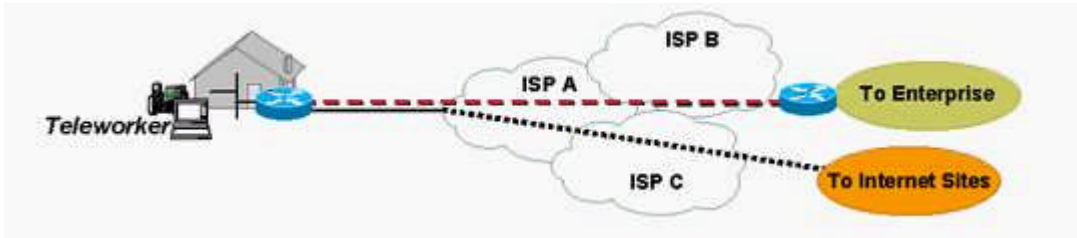
12. The LAN-side of the Teleworker router is assigned private IP address space (RFC1918), and the VPN topology is IPSec-only (no GRE protocol). When is it required to configure NAT/pNAT on the Teleworker router?

- A. when all access to the Internet is through the IPSec tunnel
- B. when there is direct Internet access via split-tunneling

- C. when there is no Internet access configured through the Teleworker router
- D. whenever you have IOS-Firewall (CBAC) configured

**Answer: B**

13. Refer to the exhibit. Asymmetric broadband service with significantly greater downstream bandwidth is recommended for Teleworker deployment. Which reason is the most accurate?



- A. Most ISPs do not provide QoS for residential broadband. Asymmetric bandwidth reduces the chance of downstream congestion when traffic from Internet sites competes for bandwidth with IP voice traffic.
- B. Additional downstream bandwidth compensates for insufficient upstream bandwidth. The aggregate bandwidth provides the same result.
- C. The additional bandwidth is needed to access more than one site. Most HTTP traffic is downstream.
- D. The additional downstream bandwidth allows the Enterprise VPN device to send the IP voice packets much faster, allowing them to reach the Teleworker network with less latency.

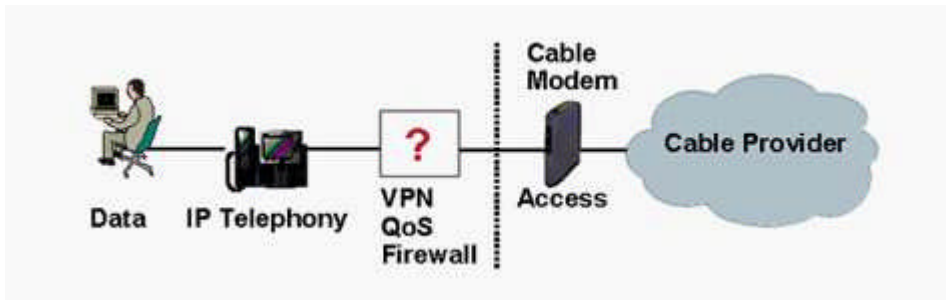
**Answer: A**

14. Select a key benefit of DSL.

- A. TCP packet sizes can be optimized by the router so there is no IPSec or AAL5 padding.
- B. The local loop is a dedicated connection for a single subscriber to the DSLAM.
- C. Access to the WAN media uses a poll/response mechanism so no two subscribers transmit at the same time.
- D. There are no distance requirements from the Central Office (CO).

**Answer: B**

15. Refer to the exhibit. Given the CPE deployment model, the Enterprise applications shown, and the functions being provided as designated, the appropriate product choice is \_\_\_\_\_.



- A. Cisco PIX 501 Firewall
- B. Cisco 831 router
- C. Cisco 837 router
- D. Cisco VPN3002 Hardware Client
- E. Cisco ubr925 cable modem
- F. Cisco SW VPN Client

**Answer: B**

# *Testinside*

Testinside.com was founded in 2002. The safer,easier way to help you pass any IT Certification exams . We provide high quality IT Certification exams practice questions and answers(Q&A). Especially [Adobe](#), [Apple](#), [Citrix](#), [Comptia](#), [EMC](#), [HP](#), [Juniper](#), [LPI](#), [Nortel](#), [Oracle](#), [SUN](#), [Vmware](#) and so on. And help you pass any IT Certification exams at the first try.

English	<a href="http://www.testinside.com"><u>http://www.testinside.com</u></a>
Chinese (Traditional)	<a href="http://www.testinside.net"><u>http:// www.testinside.net</u></a>
Chinese (Simplified)	<a href="http://www.testinside.cn"><u>http:// www.testinside.cn</u></a>