

**Exam : Cisco 642-825**

**Title : Implementing Secure  
Converged Wide Area  
Networks**

**Version : Demo**

## **Important Note, Please Read Carefully**

### **Other TestInside products**

[All TestInside.com IT Exam Products](#)

### **Our products of Offline Testing Engine**

Use the offline Testing engine product to practice the questions in an exam environment.

Build a foundation of knowledge which will be useful also after passing the exam.

[TestInside Testing Engine](#)

### **Latest Version**

We are constantly reviewing our products. New material is added and old material is revised. Free updates are available for 90 days after the purchase. You should check your member zone at TestInside and update 3-4 days before the scheduled exam date.

Here is the procedure to get the latest version:

1. Go to <http://www.TestInside.com>
2. Log in the **Member Center**
3. The latest versions of all purchased products are downloadable from here. Just click the links.

### **Feedback**

If you spot a possible improvement then please let us know. We always interested in improving product quality.

Feedback should be send to sales(at)TestInside.com. You should include the following: Exam number, version, page number, question number, and your login Account.

Our experts will answer your mail promptly.

### **Explanations**

This product does not include explanations at the moment. If you are interested in providing explanations for this exam, please contact sales(at)TestInside.com.

1. Refer to the exhibit. On the basis of the partial configuration, which two statements are true? (Choose two.)

```
RTA# show running-config
<Output Omitted>
!
interface FastEthernet0/0
  description $FW_OUTSIDE$
  ip address 64.202.2.6 255.255.255.252
  ip access-group 101 in
  ip verify unicast reverse-path
  ip inspect SDM_LOW out
  duplex auto
  speed auto
!
interface FastEthernet0/1
  description $FW_INSIDE$
  ip address 192.168.2.10 255.255.255.0
  ip access-group 100 in
  ip inspect SDM_LOW in
  duplex auto
  speed auto
!
<Output Omitted>
```

- A. A CBAC inspection rule is configured on router RTA.
- B. A named ACL called SDM\_LOW is configured on router RTA.
- C. A QoS policy has been applied on interfaces Serial 0/0 and FastEthernet 0/1.
- D. Interface Fa0/0 should be the inside interface and interface Fa0/1 should be the outside interface.
- E. On interface Fa0/0, the ip inspect statement should be incoming.
- F. The interface commands ip inspect SDM\_LOW in allow CBAC to monitor multiple protocols.

**Answer: AF**

2. Refer to the exhibit. Which two statements about the SDF Locations window of the IPS Rule wizard are true? (Choose two.)



- A. An HTTP SDF file location can be specified by clicking the Add button.
- B. If all specified SDF locations fail to load, the signature file that is named default.sdf will be loaded.
- C. The Autosave feature automatically saves the SDF alarms if the router crashes.
- D. The Autosave feature is automatically enabled for the default built-in signature file.
- E. The name of the built-in signature file is default.sdf.
- F. The Use Built-In Signatures (as backup) check box is selected by default.

**Answer: AF**

3. Refer to the exhibit. Which two statements about the AAA configuration are true? (Choose two.)

```
aaa new-model
username Bob password itsasecret
aaa authentication enable default group tacacs+ none
```

- A. A good security practice is to have the none parameter configured as the final method used to ensure that no other authentication method will be used.
- B. If a TACACS+ server is not available, then a user connecting via the console port would not be able to gain access since no other authentication method has been defined.

- C. If a TACACS+ server is not available, then the user Bob could be able to enter privileged mode as long as the proper enable password is entered.
- D. The aaa new-model command forces the router to override every other authentication method previously configured for the router lines.
- E. To increase security, group radius should be used instead of group tacacs+.
- F. Two authentication options are prescribed by the displayed aaa authentication command.

**Answer: DF**

4. Refer to the exhibit. On the basis of the information in the exhibit, which two statements are true? (Choose two.)

The screenshot shows the Cisco Router and Security Device Manager (SDM) interface. The main window is titled "Intrusion Prevention System (IPS)". On the left, there is a navigation pane with icons for various security features. The main content area shows a table of IPS signatures. The table has the following columns: Enabled, Sig ID, SubSig ID, Name, Action, Severity, and Er. The table contains the following data:

Enabled	Sig ID	SubSig ID	Name	Action	Severity	Er
<input checked="" type="checkbox"/>	1005	0	SATNET ID	alarm	informational	ATO
<input checked="" type="checkbox"/>	1006	0	Strict Src Rte	alarm	high	ATO
<input checked="" type="checkbox"/>	1101	0	Unknown IP Proto	alarm	informational	ATO
<input checked="" type="checkbox"/>	1102	0	Impossible IP packet	reset	high	ATO
<input checked="" type="checkbox"/>	1104	0	Localhost	alarm	high	ATO
<input type="checkbox"/>	1107	0	RFC1918 address	alarm drop reset	informational	ATO
<input checked="" type="checkbox"/>	1202	0	DGram too long	alarm	high	O
<input checked="" type="checkbox"/>	1206	0	Frag Too Small	alarm	informational	O

Below the table, there is a section for "Signatures marked for deletion" with a table that is currently empty. At the bottom of the window, there are buttons for "Apply Changes" and "Discard Changes". The status bar at the bottom right shows the time "23:51:58 UTC Wed Jun 14 2006".

- A. Any traffic matching signature 1107 will generate an alarm, reset the connection, and be dropped.
- B. Signature 1102 has been modified, but the changes have not been applied to the router.
- C. Signature 1102 has been triggered because of matching traffic.
- D. The Edit IPS window is currently displaying the Global Settings information.

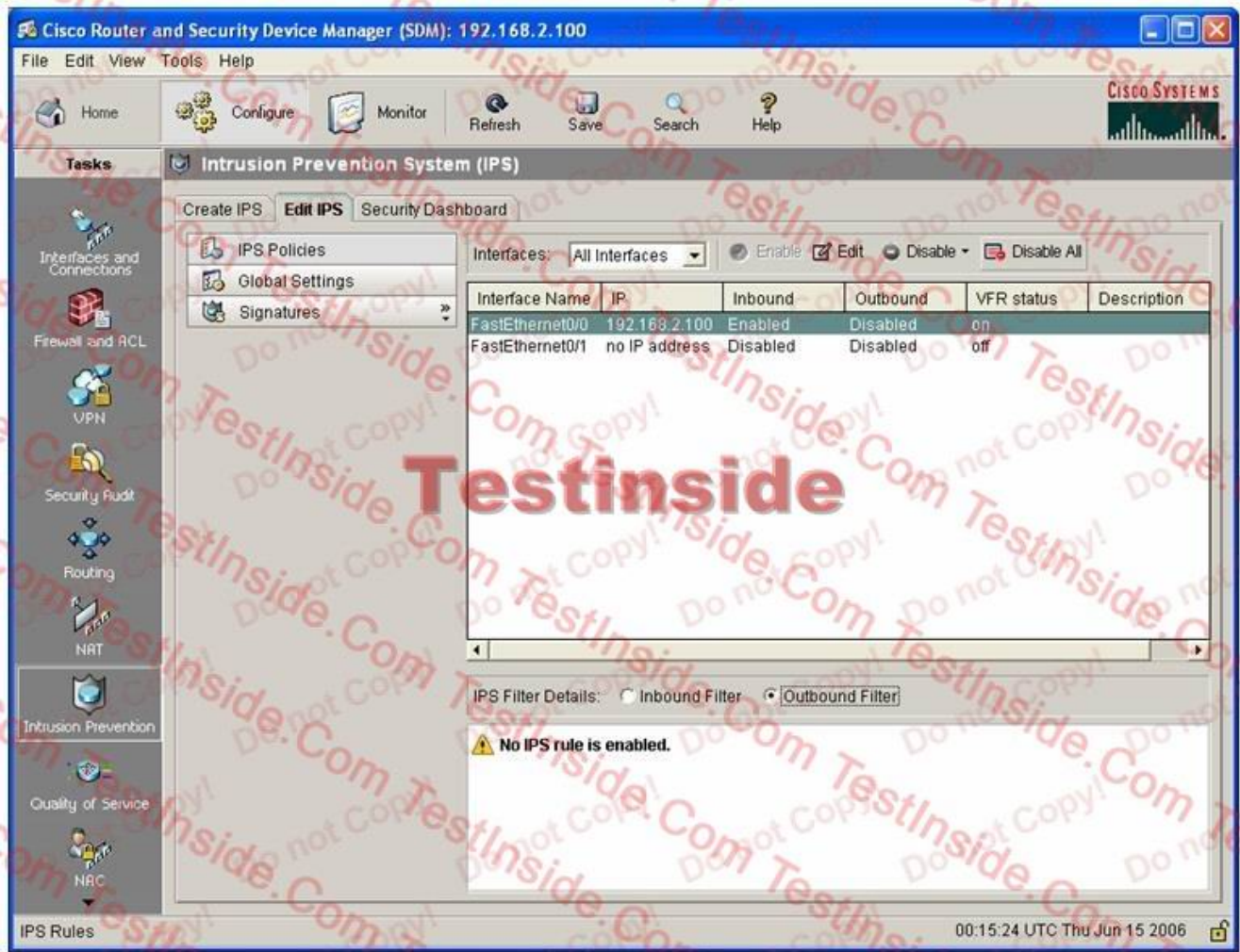
E. The Edit IPS window is currently displaying the signatures in Details view.

F. The Edit IPS window is currently displaying the signatures in Summary view.

**Answer: BE**

5. Refer to the exhibit. On the basis of the information that is provided, which two statements are true?

(Choose two.)



A. An IPS policy can be edited by choosing the Edit button.

B. Right-clicking on an interface will display a shortcut menu with options to edit an action or to set severity levels.

C. The Edit IPS window is currently in Global Settings view.

D. The Edit IPS window is currently in IPS Policies view.

E. The Edit IPS window is currently in Signatures view.

F. To enable an IPS policy on an interface, click on the interface and deselect Disable.

**Answer: AD**

# *Testinside*

Testinside.com was founded in 2002. The safer,easier way to help you pass any IT Certification exams . We provide high quality IT Certification exams practice questions and answers(Q&A). Especially [Adobe](#), [Apple](#), [Citrix](#), [Comptia](#), [EMC](#), [HP](#), [Juniper](#), [LPI](#), [Nortel](#), [Oracle](#), [SUN](#), [Vmware](#) and so on. And help you pass any IT Certification exams at the first try.

English	<a href="http://www.testinside.com">http://www.testinside.com</a>
Chinese (Traditional)	<a href="http://www.testinside.net">http:// www.testinside.net</a>
Chinese (Simplified)	<a href="http://www.testinside.cn">http:// www.testinside.cn</a>